



Zimbabwe

Countdown to 2030

Women's, Children's & Adolescents' Health

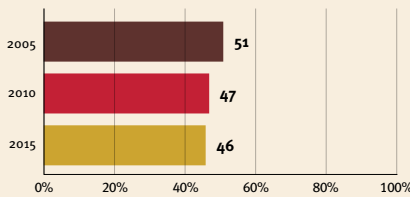
Demographics

Population	16,320,537
Annual births	491,195
Children under 5	2,314,710 (14%)
Under-five mortality	50/1,000

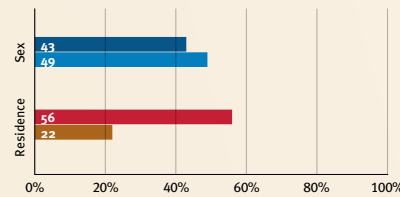
Threats to Early Childhood Development

Maternal mortality	357/100,000	Adolescent birth rate	108/1,000
Low birthweight	12%	Preterm births	17%
Child poverty	23%	Under-five stunting	22%
Violent discipline	63%	Inadequate supervision	20%

Young children at risk of poor development



Risk by sex and residence



Children with functional difficulty



Children developmentally on-track

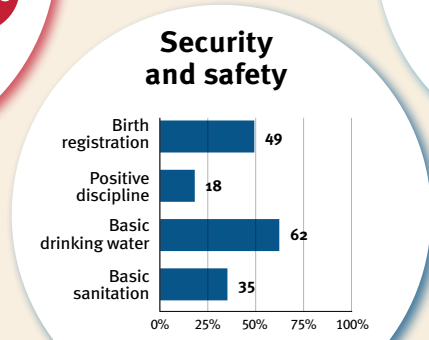
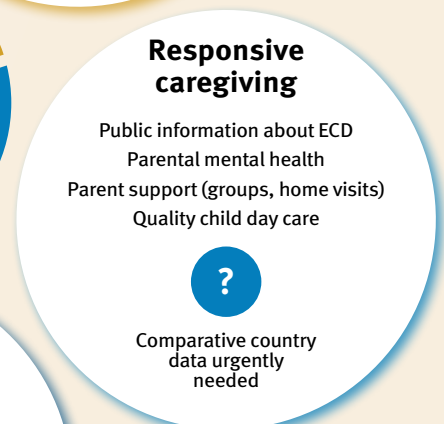
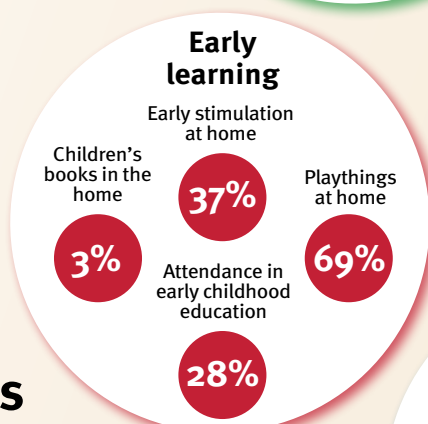
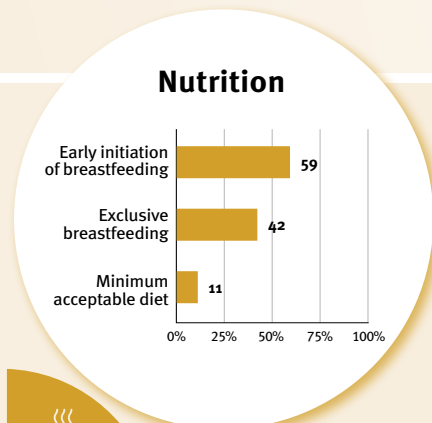
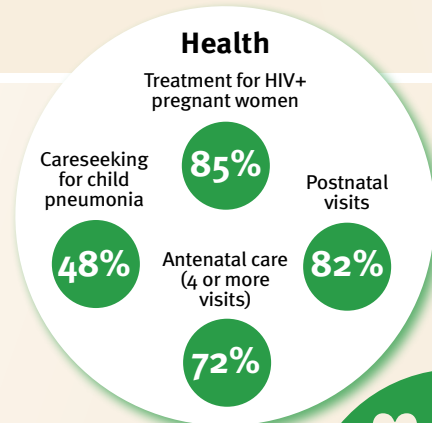


At risk in 2005, 2010 and 2015, using a composite indicator of under-five stunting or poverty

Support and services for early childhood development: Nurturing care

Parents and caregivers need a facilitating environment of laws, policies, services and community support to assist them in providing their young children with nurturing care.

Facilitating environments



Policies					
	<20%	20-39%	40-59%	60-79%	≥80%
Child and family social protection	None <14	14 - <18	18 - <26	≥26	
Maternity leave (weeks)	None <14	14 - <18	18 - <26	≥26	
Paternity leave (weeks)	None	Slightly	Moderately	Substantially	
International Code of Marketing of Breastmilk Substitutes (alignment)	X				

International conventions	
✓	Convention on the Rights of the Child
✓	Convention on the Rights of Persons with Disabilities
✓	CRIC Optional Protocol on the Sale of Children, Child Prostitution and Child Pornography
X	Hague Convention on Protection of Children and Cooperation in Respect of Inter-country Adoption