

Global ECD Policy Landscape

Chemba Raghavan
Kigali, Rwanda
October 25, 2023



unicef 
for every child

Why multisectoral ECD policies?

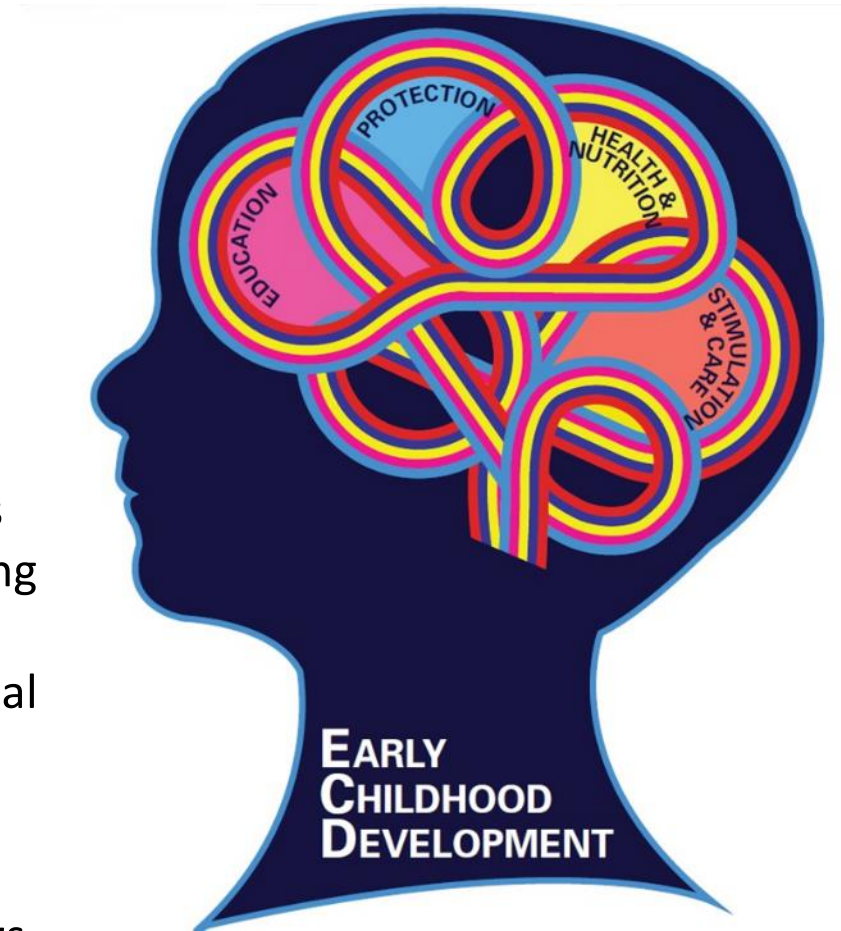
Post- COVID-19 key messages*:

- Poverty and its impact
- Health, including immune and metabolic functions
- Need for climate resilient actions

Addressing multiple deprivations:

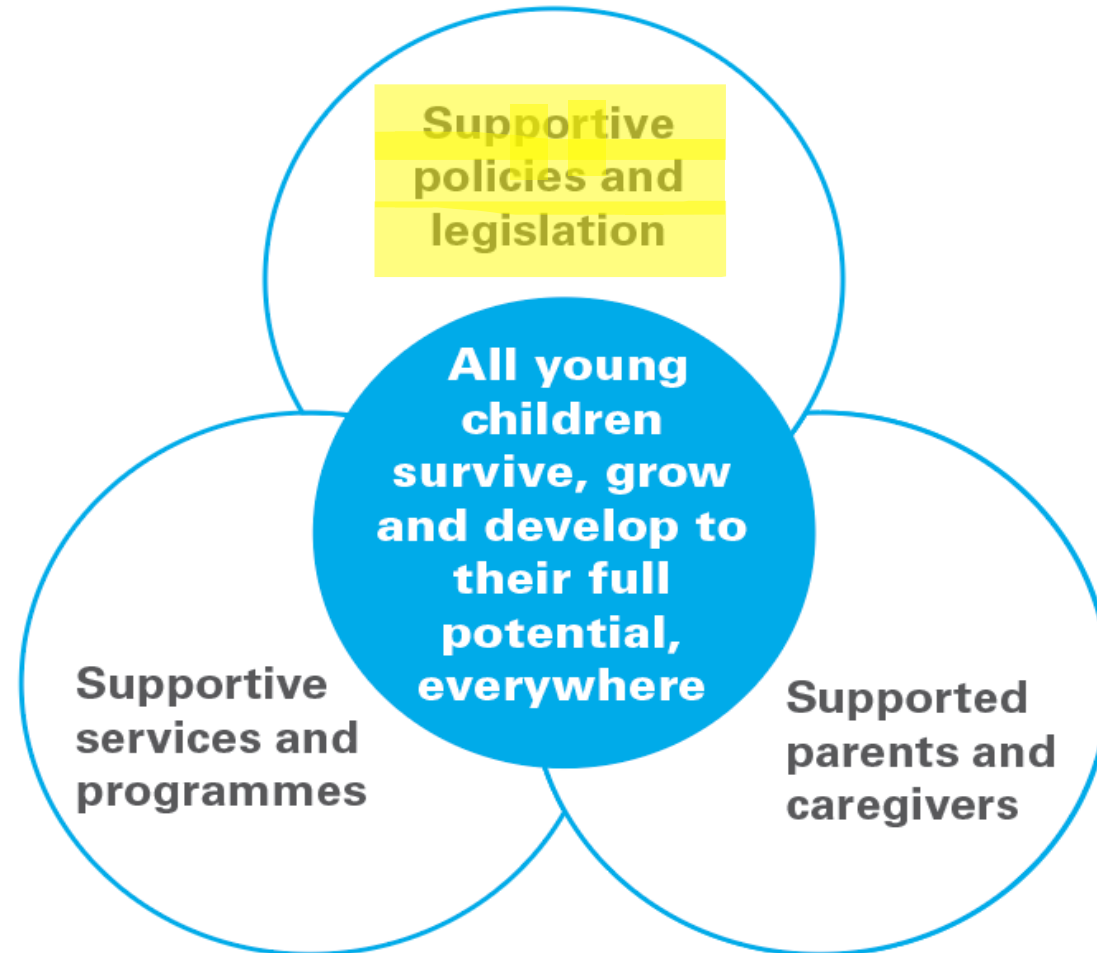
- Extreme income poverty
- Severe food poverty and malnutrition
- Poor access to essential nutrition, health, water and sanitation services
- Lack of access to early stimulation, responsive care, and learning opportunities
- Discrimination based on disability, gender identity, and sexual orientation of parents, caregivers, or any members of their families
- Violence, abuse, and neglect
- Gender discrimination
- Exposure to climatic crises, environmental pollution, armed conflicts, and migration

*Shonkoff, J. P., (2022). Re-Envisioning Early Childhood Policy and Practice in a World of Striking Inequality and Uncertainty



Ingredients needed for holistic ECD

ECD is an outcome requiring strong systems and multisectoral collaboration



Definitions and Criteria for Identifying Multisectoral ECD Policies

Inclusion Criteria:	A National ECD Policy Document Must:	Be Officially Adopted By:
<ul style="list-style-type: none">• Existence of ECD policy or an ECD policy statement or policy framework• ECD policy plus an ECD action plan or an ECD strategic plan• ECD strategic plan or strategy with the attributes of an ECD policy• ECD law with the attributes of an ECD policy	<ul style="list-style-type: none">• Be national in scope• Be multisectoral (health, nutrition, education, and social welfare/protection sectors, and WASH).• Cover the period from preconception or pregnancy to five or eight years of age.• Include most of the following sections to be comprehensive:<ul style="list-style-type: none">○ Situation analysis or justification○ Vision and/or mission statements○ Goals and/or objectives○ Strategic priorities○ Activities and services○ A multisectoral ECD organizational framework	<ul style="list-style-type: none">• The national government, usually by the Cabinet of Ministers, the Parliament or Congress, and (rarely) by a Presidential Decree

What are key ingredients of enabling environments?

- **Policies:**
 - Governance with accountability
 - Coordination
 - Collaboration platforms
 - Financing
 - Monitoring framework
 - Evaluation
- **Strategies needed for robust use of data and measurement:**
 - Evidence
 - Advocacy messaging
 - Stakeholder engagement
 - Community voices and platforms





FAMILY-FRIENDLY POLICIES?

Why: Investing in Family-Friendly Policies is:

- GOOD FOR CHILDREN
 - GOOD FOR WOMEN
 - GOOD FOR BUSINESS
 - GOOD FOR THE ECONOMY
-
- **WHAT:** Family-friendly policies are the measures and arrangements that have a positive impact on workers' abilities to reconcile work and family responsibilities – and advance the development and well-being of children and caregivers

Emerging trends: Monitoring Family-Friendly Policies

Governments and businesses need to create and TRACK **enabling environments** for parents to give their children the best start in life, while boosting productivity and women's empowerment.



PAID
PARENTAL
LEAVE



REMUNERATED
BREASTFEEDING
BREAKS



AFFORDABLE,
ACCESSIBLE,
QUALITY CHILDCARE



CHILD GRANTS



Family-Friendly Policies: Focus on the Informal Economy and Childcare in crises



Family-friendly policies are defined as those policies that help to **balance and benefit both work and family life** and typically provide three types of **essential resources** needed by parents and caregivers of young children: time, finances and services

Track and monitor family friendly policies

Income support for parents in the informal economy

Access to quality affordable childcare

Health care, safe and healthy environments

Workplace support for breastfeeding

Thank You

