



Central African Republic

Countdown to 2030

Women's, Children's & Adolescents' Health

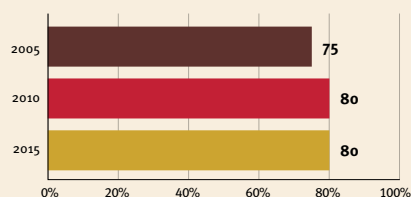
Demographics

Population	5,240,249
Annual births	246,241
Children under 5	989,277 (19%)
Under-five mortality	92/1,000

Threats to Early Childhood Development

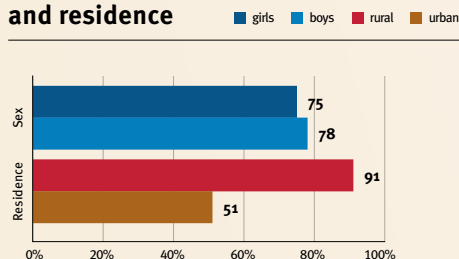
Maternal mortality	692/100,000	Adolescent birth rate	184/1,000
Low birthweight	16%	Preterm births	13%
Child poverty	64%	Under-five stunting	39%
Violent discipline	85%	Inadequate supervision	49%

Young children at risk of poor development



At risk in 2005, 2010 and 2015, using a composite indicator of under-five stunting or poverty

Risk by sex and residence



Children with functional difficulty

15%

Children developmentally on-track

36%

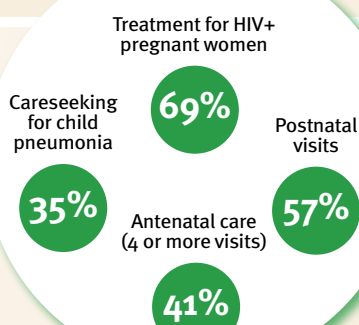
Support and services for early childhood development: Nurturing care

Parents and caregivers need a facilitating environment of laws, policies, services and community support to assist them in providing their young children with nurturing care.

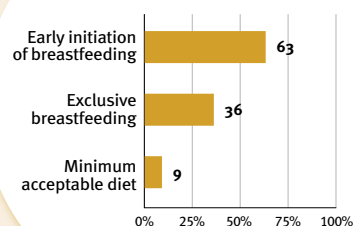
Facilitating environments

Policies				
✓	Officially adopted national multisectoral ECD policy			
<20%	20-39%	40-59%	60-79%	≥80%
Child and family social protection				
None	<14	14 – <18	18 – <26	≥26
Maternity leave (weeks)				
None	<14	14 – <18	18 – <26	≥26
Paternity leave (weeks)				
Not	Slightly	Moderately	Substantially	
International Code of Marketing of Breastmilk Substitutes (alignment)				

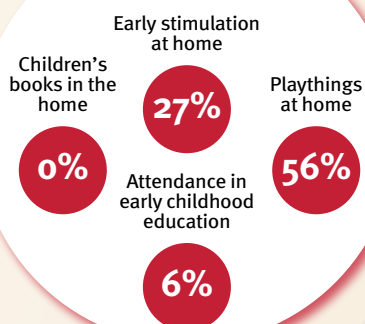
Health



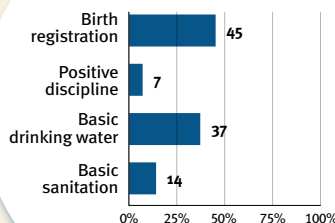
Nutrition



Early learning



Security and safety



Responsive caregiving

Public information about ECD
Parental mental health
Parent support (groups, home visits)
Quality child day care

?

Comparative country data urgently needed

International conventions

✓	Convention on the Rights of the Child
✓	Convention on the Rights of Persons with Disabilities
✓	CRC Optional Protocol on the Sale of Children, Child Prostitution and Child Pornography
✗	Hague Convention on Protection of Children and Cooperation in Respect of Intercountry Adoption