



# Madagascar

## Countdown to 2030

Women's, Children's & Adolescents' Health

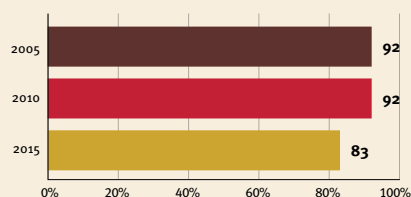
### Demographics

Population	31,578,390
Annual births	1,013,751
Children under 5	4,656,107 (15%)
Under-five mortality	65/1,000

### Threats to Early Childhood Development

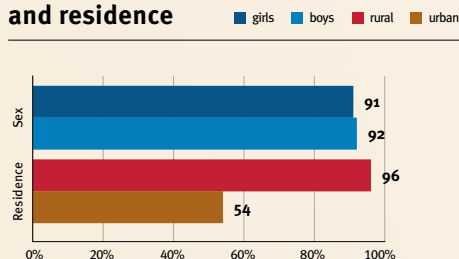
Maternal mortality	445/100,000	Adolescent birth rate	143/1,000
Low birthweight	19%	Preterm births	14%
Child poverty	86%	Under-five stunting	38%
Violent discipline	88%	Inadequate supervision	34%

### Young children at risk of poor development



At risk in 2005, 2010 and 2015, using a composite indicator of under-five stunting or poverty

### Risk by sex and residence



### Children with functional difficulty

10%

### Children developmentally on-track

67%

## Support and services for early childhood development: Nurturing care

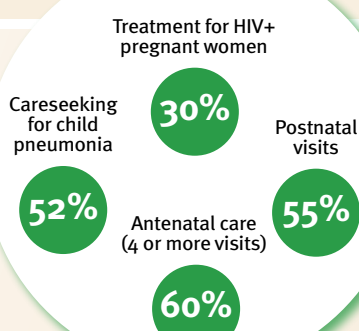
Parents and caregivers need a facilitating environment of laws, policies, services and community support to assist them in providing their young children with nurturing care.

## Facilitating environments

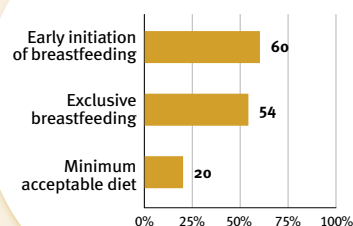
### Policies

X	Officially adopted national multisectoral ECD policy				
	<20%	20-39%	40-59%	60-79%	≥80%
Child and family social protection					
	None	<14	14 – <18	18 – <26	≥26
Maternity leave (weeks)					
	None	<14	14 – <18	18 – <26	≥26
Paternity leave (weeks)					
	Not	Slightly	Moderately	Substantially	
International Code of Marketing of Breastmilk Substitutes (alignment)					

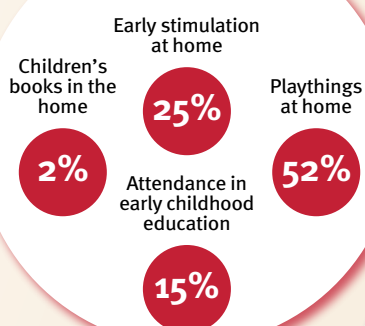
### Health



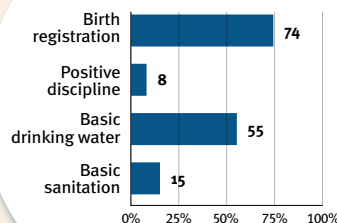
### Nutrition



### Early learning



### Security and safety



### Responsive caregiving

Public information about ECD  
Parental mental health  
Parent support (groups, home visits)  
Quality child day care

?

Comparative country data urgently needed

### International conventions

✓	Convention on the Rights of the Child
✓	Convention on the Rights of Persons with Disabilities
✓	CRC Optional Protocol on the Sale of Children, Child Prostitution and Child Pornography
✓	Hague Convention on Protection of Children and Cooperation in Respect of Intercountry Adoption